



# MAGN-US

CARBON DIOXIDE REDUCER

**-50%**

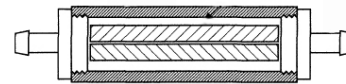
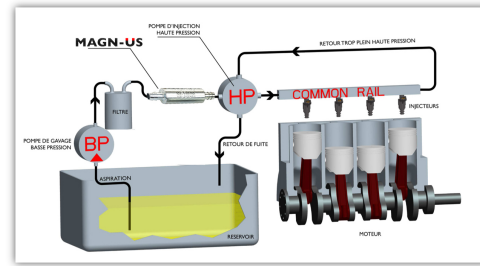


# MAGN-US

**Easy to use**  
Installation between the  
fuel filter and the  
injection pump.

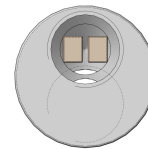
**Maintenance**

every 100 000 km



**Magnets**

Rare earths with a  
unique composition of  
three alloys to create a  
high power Gauss.



Multiplication of  
Gauss powers  
**16500 Gauss**



**Robust**

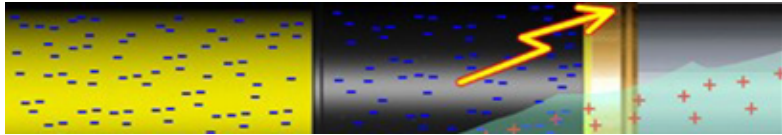
removes iron oxides

**Reduction of nitrogen oxides**  
Eliminates static loads



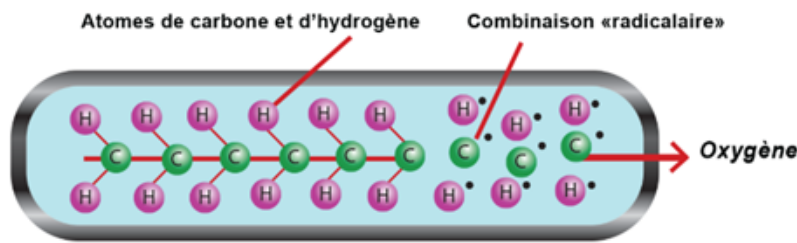
# ACTION 1 REDUCTION OF CARBON MONOXIDES

Static electricity is generated when a weakly conductive fuel flows through a non-conductive pipe. The fuel will be positively charged and the hose wall negatively charged. Since the charges in the hose cannot go anywhere, static electricity builds up as long as the fuel continues to flow. The electrostatic charges remain on the fuel droplets, which are attracted to the cylinder walls and mix less well with the air, resulting in incomplete combustion, not all the fuel is burned efficiently. Carbon remains in the form of soot and fumes. The excess of unused oxygen increases the proportion of NOx. (nitrogen oxides). Thanks to MAGN-US with its strong magnetic field, it deflects these static charges for a better combustion.

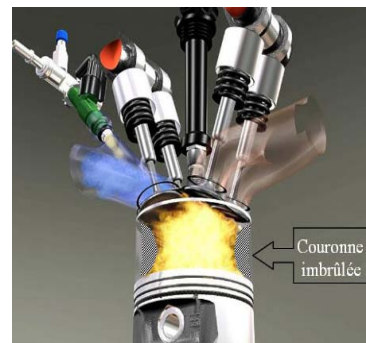


# ACTION 2 IMPROVED COMBUSTION

The action of a strong magnetic field substantially transforms the hydrogen atom by changing its initial stable state into a more energetic, volatile unstable state, capable of attracting more oxygen (combustion feed).



Before & after injectors

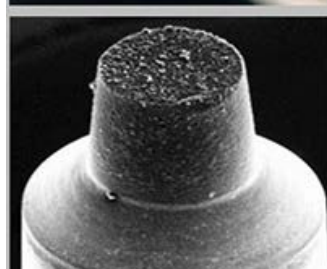
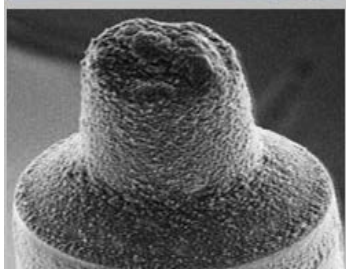


-50%

Opacity with MAGN-US

-70%

Opacity with MAGN-US + Descaling



up to -25% fuel savings

## Technical information



MAG 1



MAG 2



AFRIQUE ENVIRONNEMENT: 36 Avenue Zerktouni 40000 Marrakech - Maroc

	MAG 1	MAG 2
Vehicle type	Mopeds / Scooters	<ul style="list-style-type: none"> <li>city dwellers</li> <li>Motorcycles</li> <li>Mini 4x4</li> <li>Backhoe loader</li> </ul>
Cylinder	From 49 cm <sup>3</sup>	More than 1000 cm <sup>3</sup>
Length / Diameter	50 mm / 10 mm	75 mm / 38 mm
Material	shielding, no magnetization outside	shielding, no magnetization outside
Average weight	15 gr.	75 gr.
Filtration capacity	20 l/h	60 l/h
Operating temperature	-10° à 70°	-10° à 70°
Filtration	Essence / Mixture	Essence / Diesel
Magnetic Power	14000 gauss	24000 gauss
Thread	Flexible hose inner diameter 3.5 to 6 mm	Flexible hose inner diameter 7 to 9 mm
Duration	for life	for life

## Technical information



MAG 3



MAG PRO



AFRIQUE ENVIRONNEMENT: 36 Avenue Zerktouni 40000 Marrakech - Maroc

	MAG 3	MAG-PRO
Vehicle type	<ul style="list-style-type: none"> <li>Light passenger vehicle</li> <li>Utility</li> </ul>	<ul style="list-style-type: none"> <li>Heavy-duty vehicle</li> <li>Coach</li> <li>Construction machine</li> <li>Garbage bin</li> </ul>
Cylinder	From 1000 cm <sup>3</sup>	More than 2 500 cm <sup>3</sup>
Type of boiler	Boilers up to 400 kw / h	Boilers up to 4 Mégas
Length / Diameter	97 mm / 22 mm	75 mm / 38 mm
Material	Brushed aluminum body	Brushed aluminum body
Average weight	145 gr.	460 gr.
Filtration capacity	90 l/h	120 l/h
Operating temperature	-10° à 90°	-10° à 70°
Filtration	Essence / Diesel	Essence / Diesel
Magnetic Power	24000 Gauss	40000 gauss
Thread	10 à 12 mm	Banjo direct fitting M14x150. diam. 10 mm
Maintenance	Every 100,000 km Cleanable and reusable	Every 100,000 km Cleanable and reusable